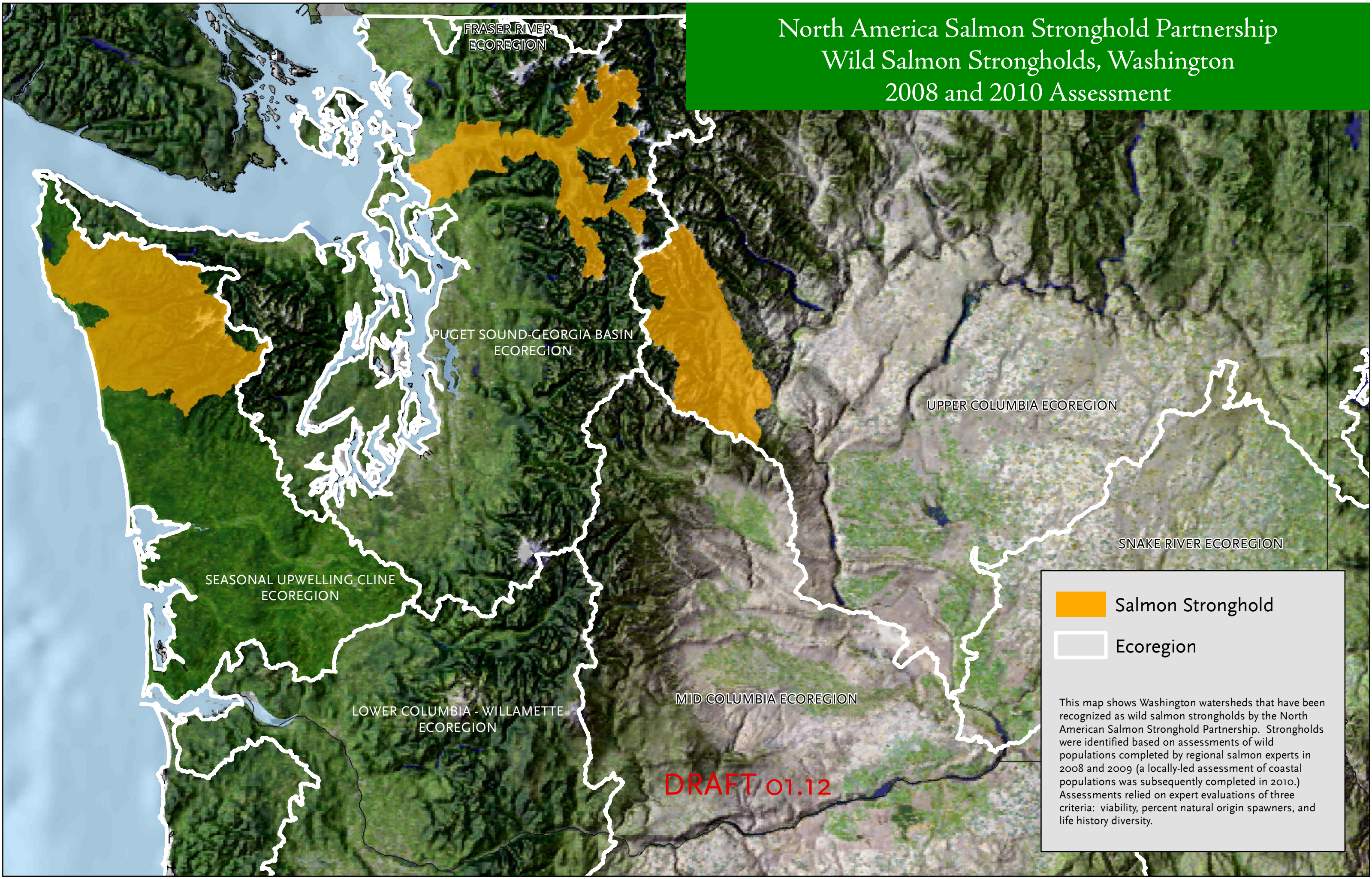

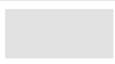


North America Salmon Stronghold Partnership
Wild Salmon Strongholds, Washington
2008 and 2010 Assessment



-  Salmon Stronghold
-  Ecoregion

This map shows Washington watersheds that have been recognized as wild salmon strongholds by the North American Salmon Stronghold Partnership. Strongholds were identified based on assessments of wild populations completed by regional salmon experts in 2008 and 2009 (a locally-led assessment of coastal populations was subsequently completed in 2010.) Assessments relied on expert evaluations of three criteria: viability, percent natural origin spawners, and life history diversity.